



# Cleveland Controls

Division of UniControl Inc.

## Contractor Kit MODEL SUFFIX "-121"

### ANY CLEVELAND CONTROLS AIR FLOW SENSING SWITCH CAN BE ORDERED IN "KIT" FORMAT.

A kit consists of a specific model air switch and a set of components to install it in most standard applications. Kits are packaged in compact chipboard boxes designed for the contractor's convenience. Each box is specifically labeled. Custom label requirements (such as barcoding, proprietary part numbers and logos) can be provided.

To order a kit, add the suffix "-121" to any Cleveland Controls model number.

### KITS ARE PACKAGED IN INDIVIDUALLY LABELED CARTONS CONTAINING:

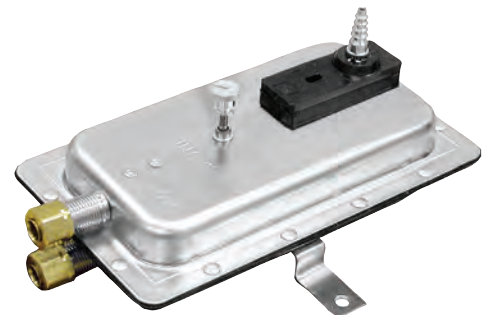
- 1 air switch (specify required model number).
- 1 piece P/N 18311-121 Tube Kit consisting of 2 pieces aluminum adapter tube with 2 pcs. P/N 27577-037 mounting screw.
- 1 piece P/N 18647 Poly Tube, 6" length.
- 1 descriptive bulletin (appropriate literature for the selected switch model).
- 1 chipboard box; dimensions are: 4-<sup>11</sup>/<sub>16</sub>" x 3-<sup>3</sup>/<sub>4</sub>" x 6-<sup>7</sup>/<sub>16</sub>" .



### POSSIBLE CHOICES INCLUDE (FROM TOP LEFT, CLOCKWISE):

- AFS-222 Adjustable General Purpose Switch
- AFS-460, Adjustable Switch with Manual Reset Button
- PAS-2100 Pneumatic Switch

Ask for product bulletins for these or any other models of interest.



**Cleveland Controls**  
DIVISION OF UNICONTROL INC.  
1111 Brookpark Rd  
Cleveland OH 44109

Tel: 216-398-0330

Fax: 216-398-8558

Email: [salesvac@unicontrolinc.com](mailto:salesvac@unicontrolinc.com)

Web page: <http://www.clevelandcontrols.com>

Are  
you reading  
a FAX or a COPY  
of this bulletin?  
DOWNLOAD the full-  
color PDF version  
of this and other  
literature at our  
website!